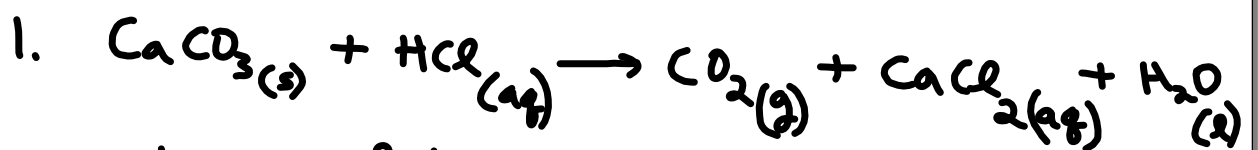
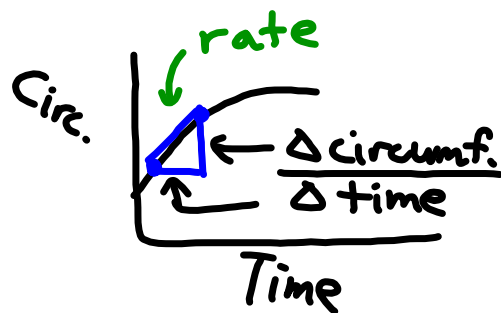
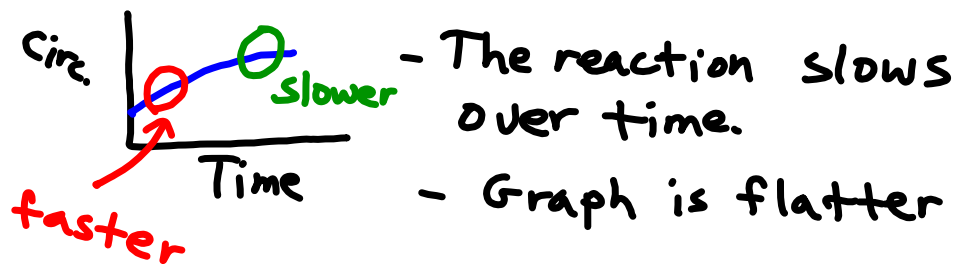


Rate of Reaction-Lab Activity



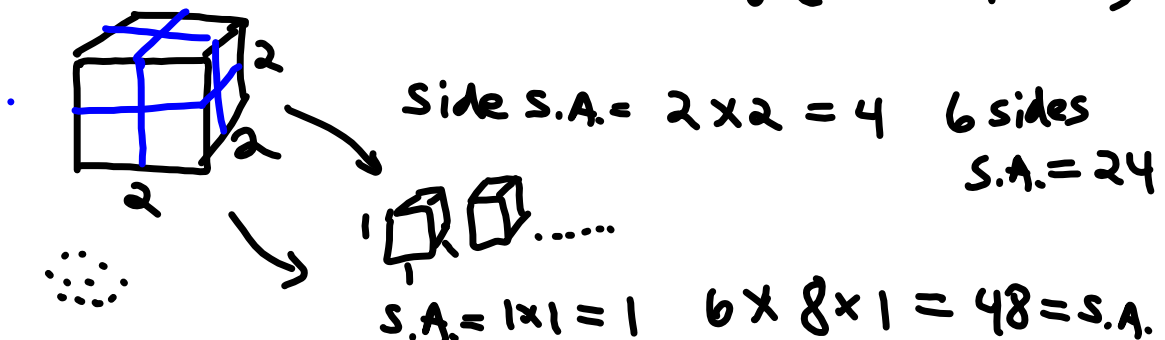
- change of balloon circumference shows more CO_2 molecules are produced



Factors Affecting Rate of Reaction

Text - p. 467

1. Temperature: Higher temp. \Rightarrow faster reaction
 Lower- food in refrigerator
2. Concentration of reactants - higher [] \Rightarrow faster reaction
 concentration
3. Surface area of reactants
 more S.A. \Rightarrow faster reaction
 e.g. wood fire - kindling (small pieces)



4. Nature of reaction- Some fast (explosion)
 - some slow (growing)
5. Catalyst - speeds reaction. Not used up.
 e.g. car exhaust - catalytic converter
 enzymes

Read text p. 467 Read 12.2 Theories